



Report of 2011 Technical Capability of EELY Shanghai

2011.08



Contents

- **Product Categories**
- **Main New Products**
- **Introduction of Main Technical Capability**



Product Categories

- **Membrane switch with PET & PC material.**
- **Membrane switch with FPC.**
- **Membrane switch with PCB.**
- **Membrane switch with silicon rubber keypad.**
- **Membrane switch with OCA window adhesive.**
- **Membrane switch with epoxy coating keypad.**
- **Membrane switch with vacuum coating material.**
- **Membrane switch with EL backlight.**
- **Membrane switch with metal backplane.**
- **Overlay with PC, PET & TPU material.**



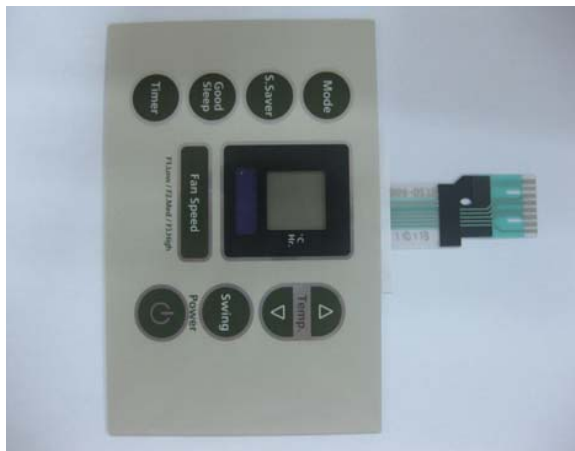
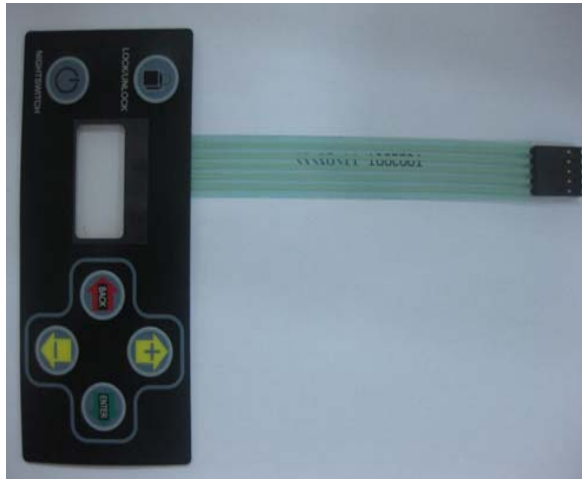
Product Categories

Main structure of the membrane switch:

- 1、 Tactile & flat type with PET, PC & silicon rubber material.**
- 2、 Flexible silver paste circuit, FPC circuit, PCB circuit, with EL backlight.**
- 3、 Surface mount components such as LED, diode and sensor.**
- 4、 Design with the request of waterproof & UV-proof.**
- 5、 EL backlight & LGF backlight**
- 6、 ESD protection design using Al foil, printing silver or carbon paste & ITO film.**

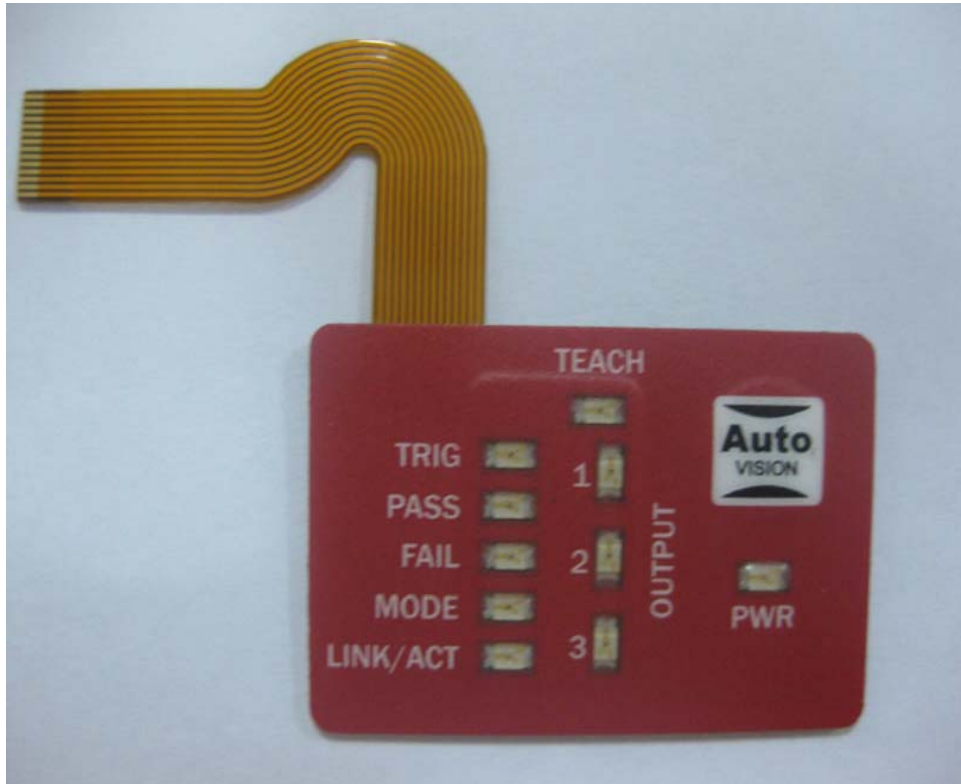


Membrane Switch with PET & PC Material

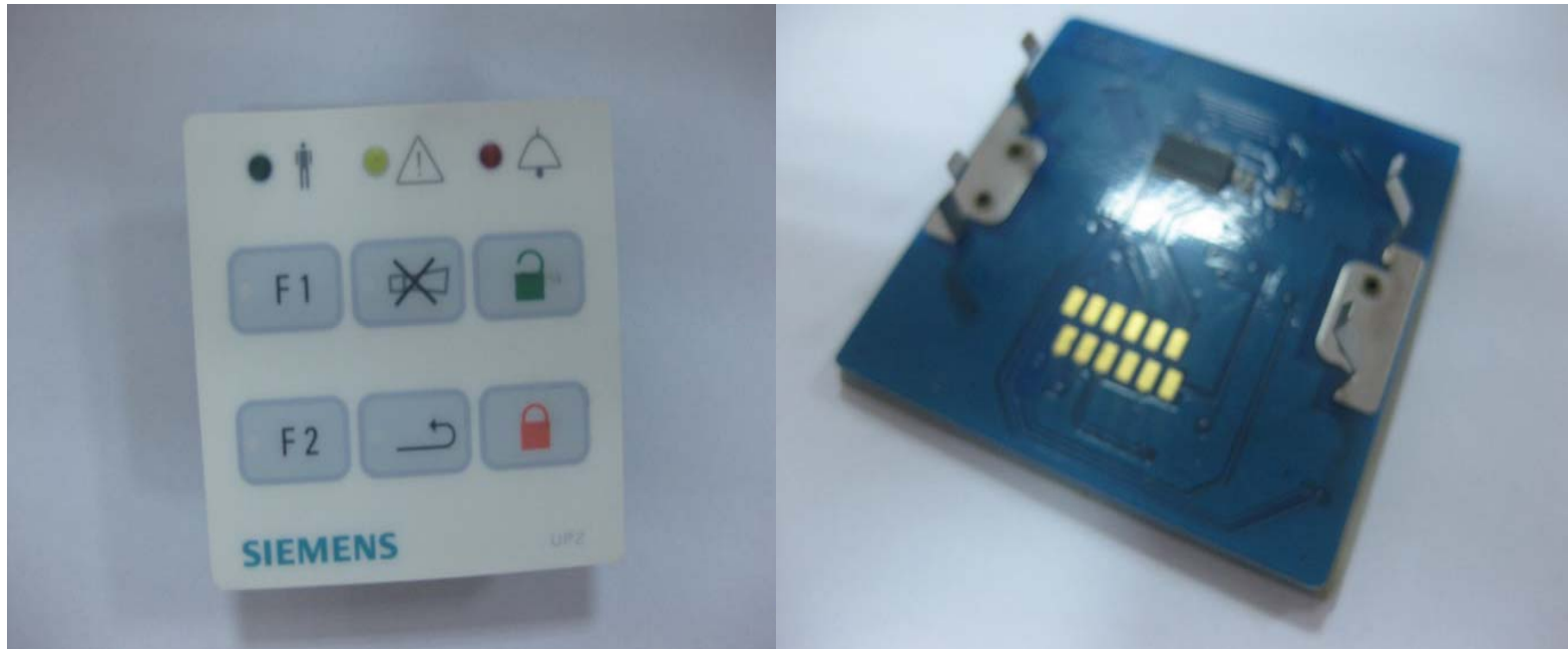




Membrane Switch with FPC Material



Membrane Switch integrated with PCB





Membrane Switch with Silicon Rubber





Membrane Switch with OCA in Window area



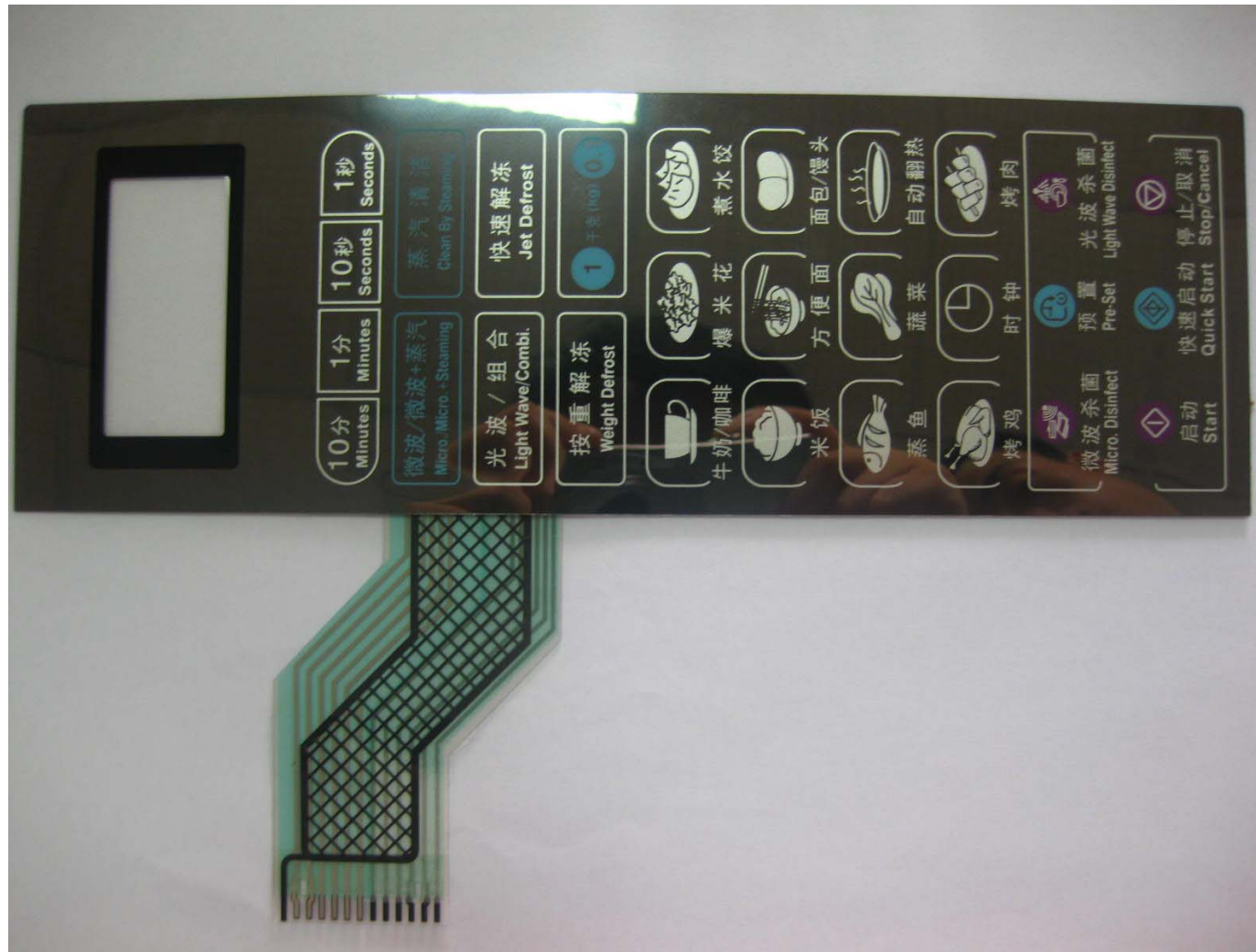


Membrane Switch with Epoxy Coating Keypad





Membrane switch with vacuum coating material

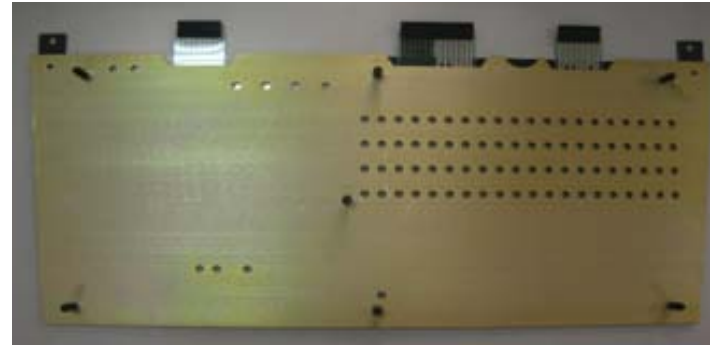


Membrane Switch with EL backlight



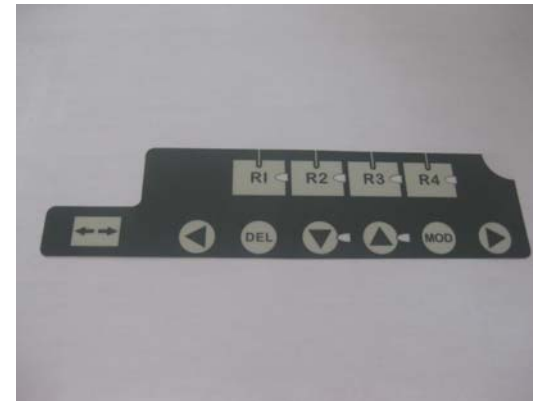


Membrane switch with metal backplane





Overlay with PC, PET & TPU material





Main New Products

- **Duraswitch patent membrane switch.**
- **LGF backlight membrane switch.**
- **Capacitive membrane switch.**
- **3D printing membrane switch.**
- **Variable resistance membrane switch.**



Duraswitch patent membrane switch



LGF backlight membrane switch





Capacitive membrane switch

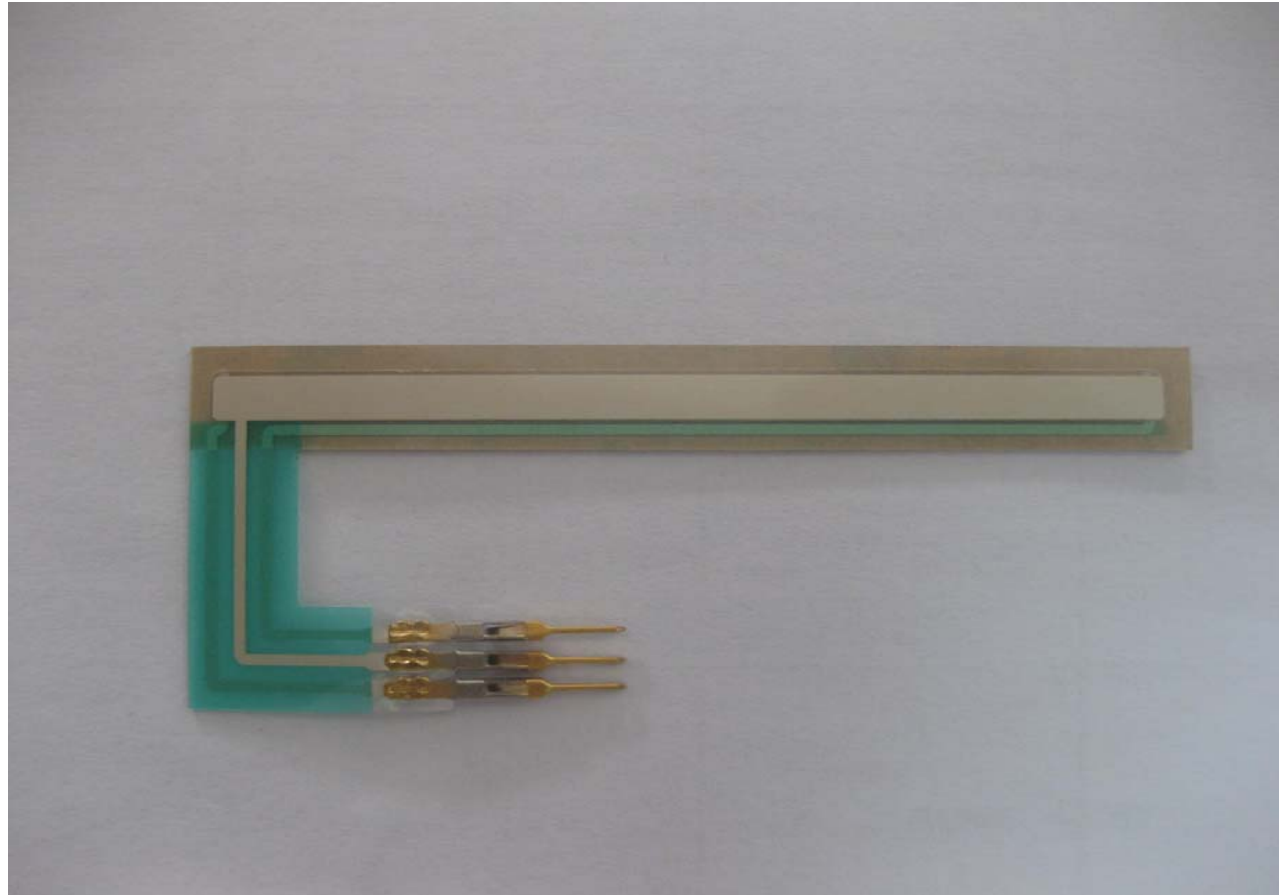




3D printing membrane switch



Variable resistance membrane switch





Introduction of Main Technical Capability

Outline

- The tolerance of product is $\pm 0.1\text{mm}$ after hard tooling punch.
- The least distance for the circuit to edge is 0.5mm.
- The least diameter of punched hole is 0.5mm.
- The least distance between centers of straight knives is 1mm.



Introduction of Main Technical Capability

Circuit

- The least pitch of circuit printing is 0.5mm, the least line width is 0.25mm.
- The least distance for the circuit to edge is 0.5mm.
- The most length of circuit we have made is 2m.
- Can make ESD protection layer according to customer's design.
- The loop resistance of keypad is normally $<200 \Omega$ and can be designed according to customer's requirement.



Introduction of Main Technical Capability

Overlay

- **3D pattern design.**
- **Four-colors printing.**
- **The ruling number of fine dots can reach 100/inch.**
- **The least width of line is 0.15mm.**
- **The most length of overlay we have made is 800mm.**



End & Thanks!